

Team IV: Mapping Vulnerable Neighborhoods In Alachua County, A New Hope

Chris Carusiello, Nicole Galehouse,
Danielle Heaps, Ryan Garcia

In loving memory of Nandi Smith

Main Goal

We will be analyzing how the choices of parents affect the children's educational achievements. We will do this by reviewing the proximity to amenities such as schools and recreation centers as it relates to the amount of property taxes paid.

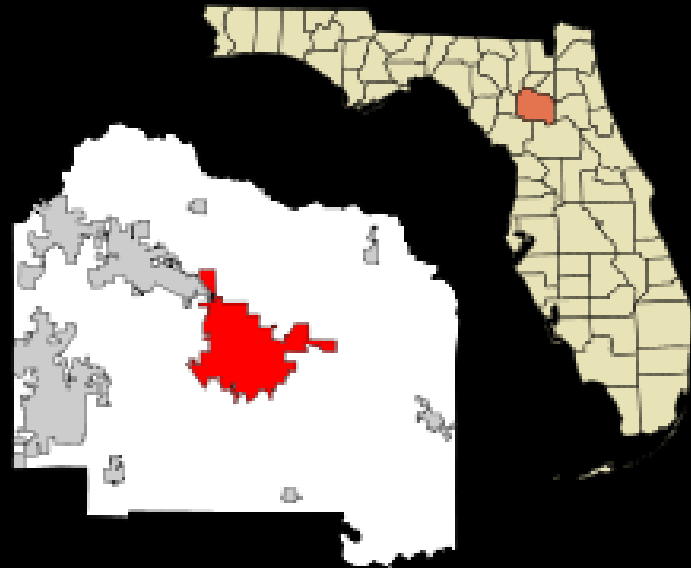
Million Dollar Block Theory

- Few, high cost, high crime neighborhoods
- High recidivism
- Lower costs in long run

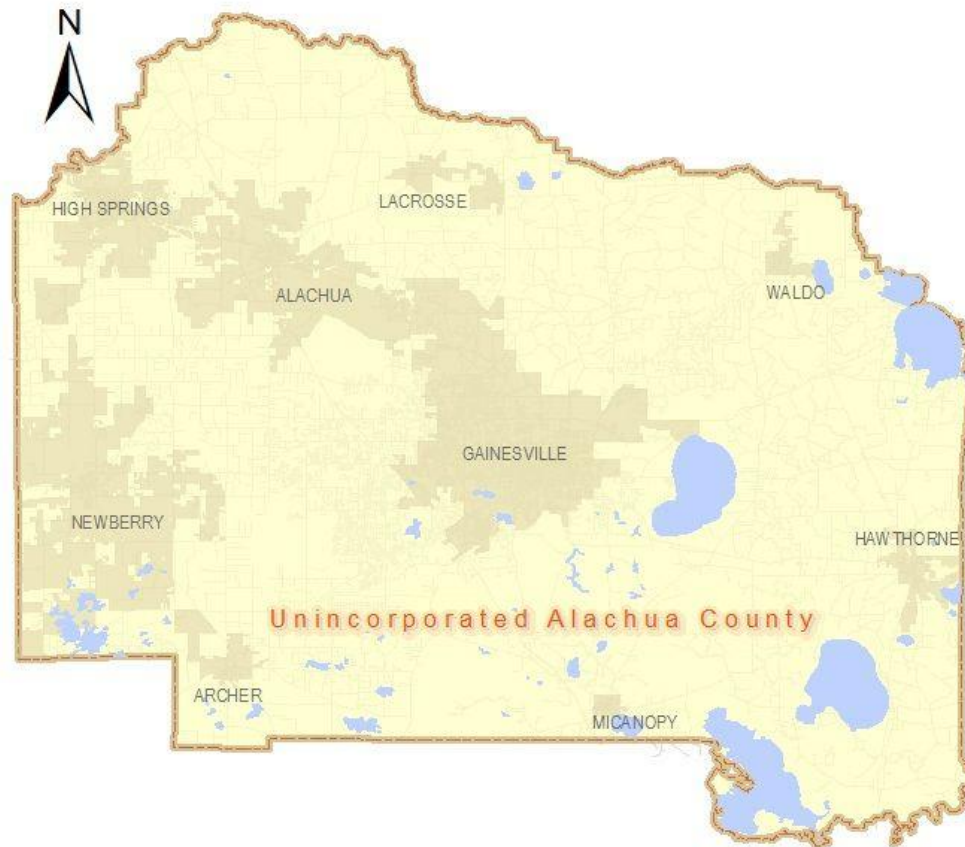


Alachua County Demographics

- Total Population: 247,366
- 65,000 students
- 23.6% below poverty line
- Gainesville Population: 124,354



Alachua County



0 2.5 5 10 15 20
Miles

Determine factors that make an area at-risk.

Look through datasets to find data that elaborates on these factors.

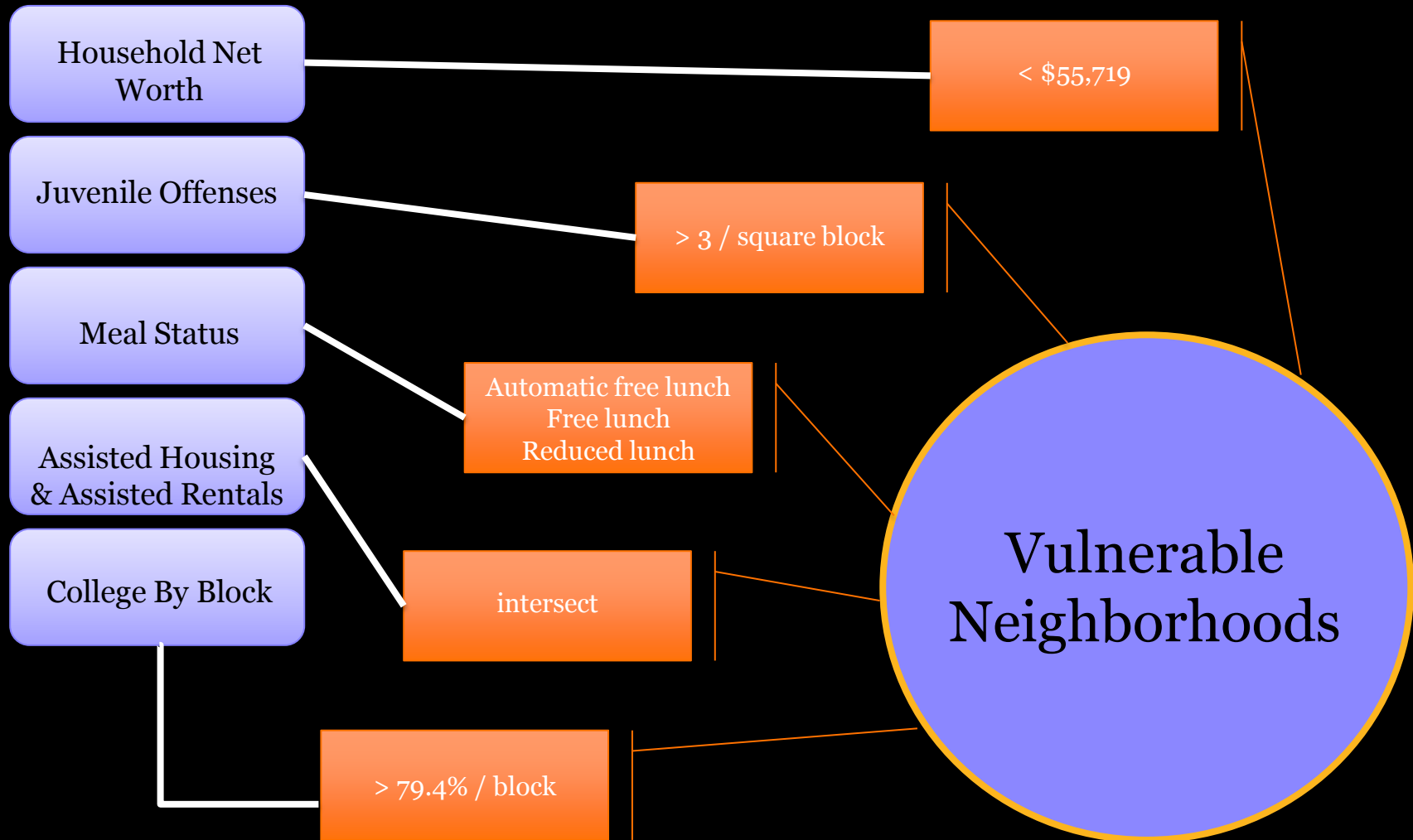
Develop criteria for separating at-risk factors.

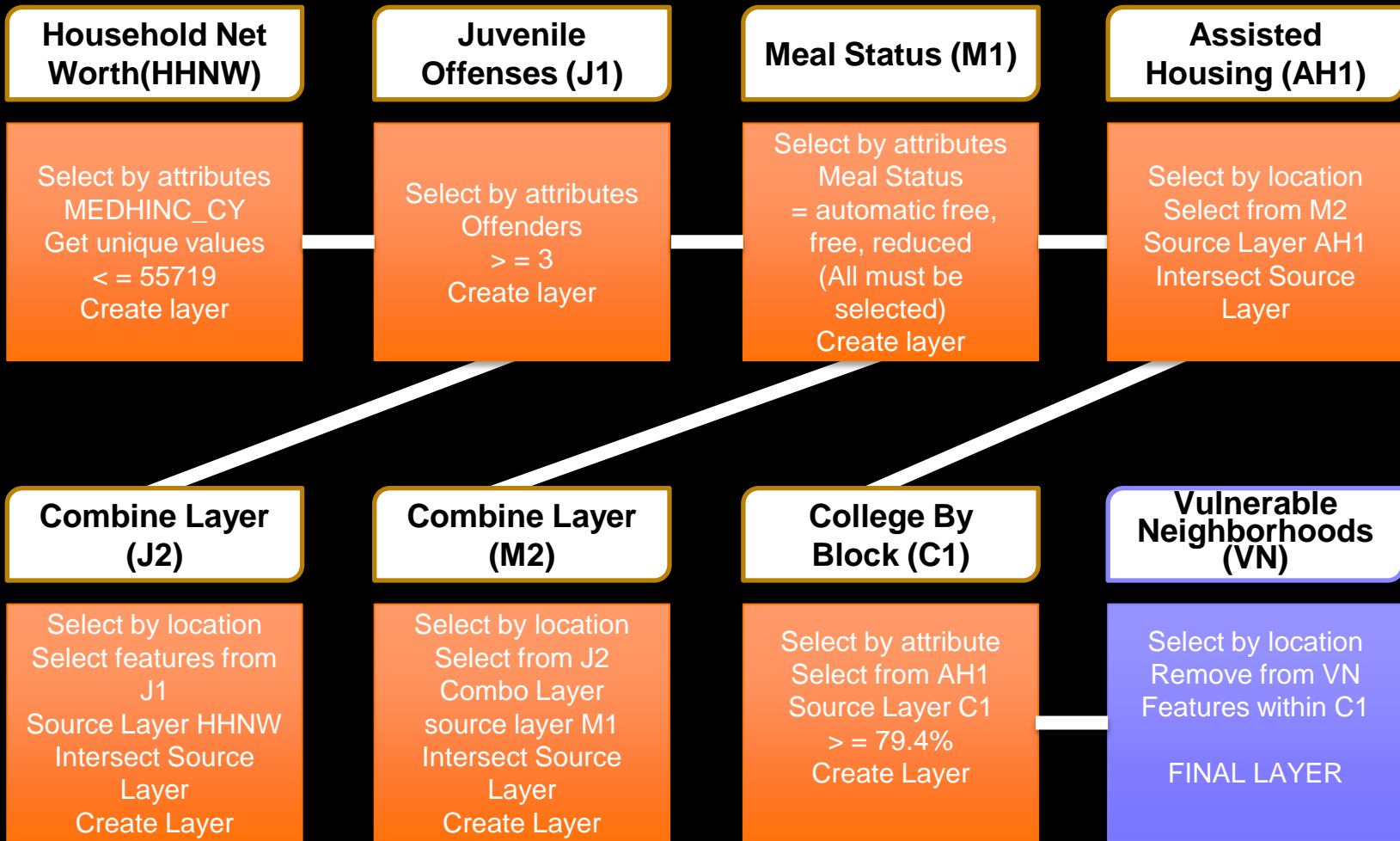
Use GIS to map said criteria and visually show at-risk areas.

Interpret results and draw conclusions.

GIS Flow Charts: Analysis Process

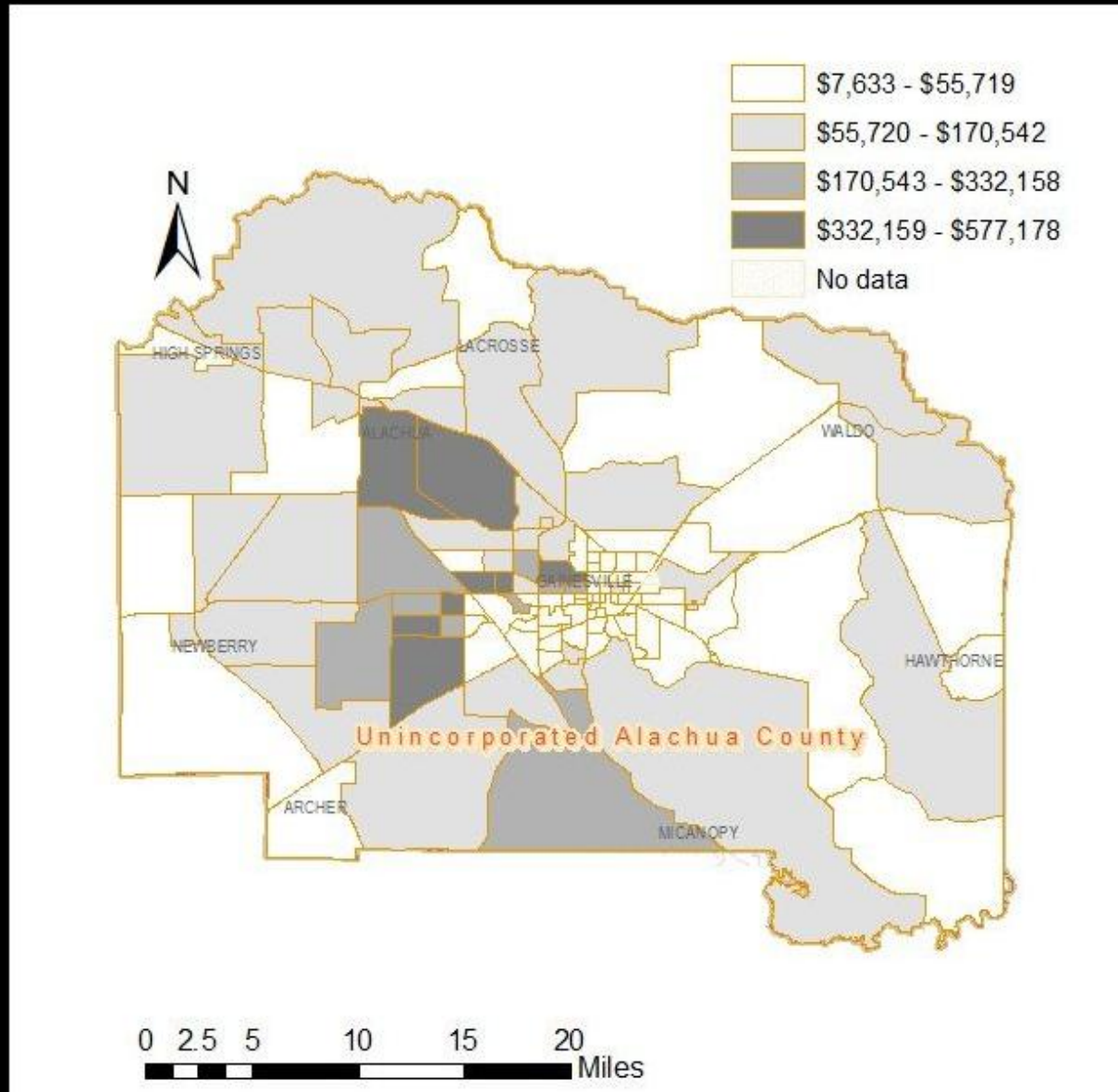
GIS Flow Charts: Specific Values Used



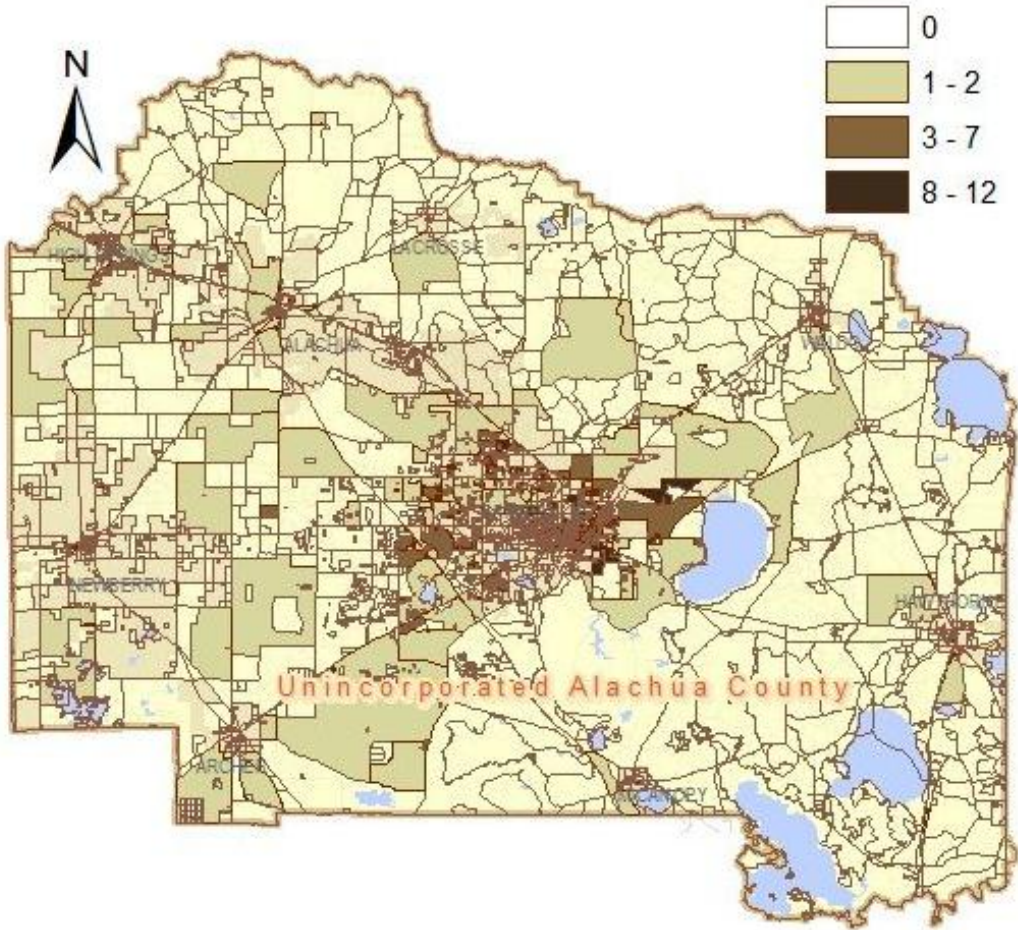


GIS Flow Charts: ArcGIS Tools Used

Household Net Worth (HHNW)

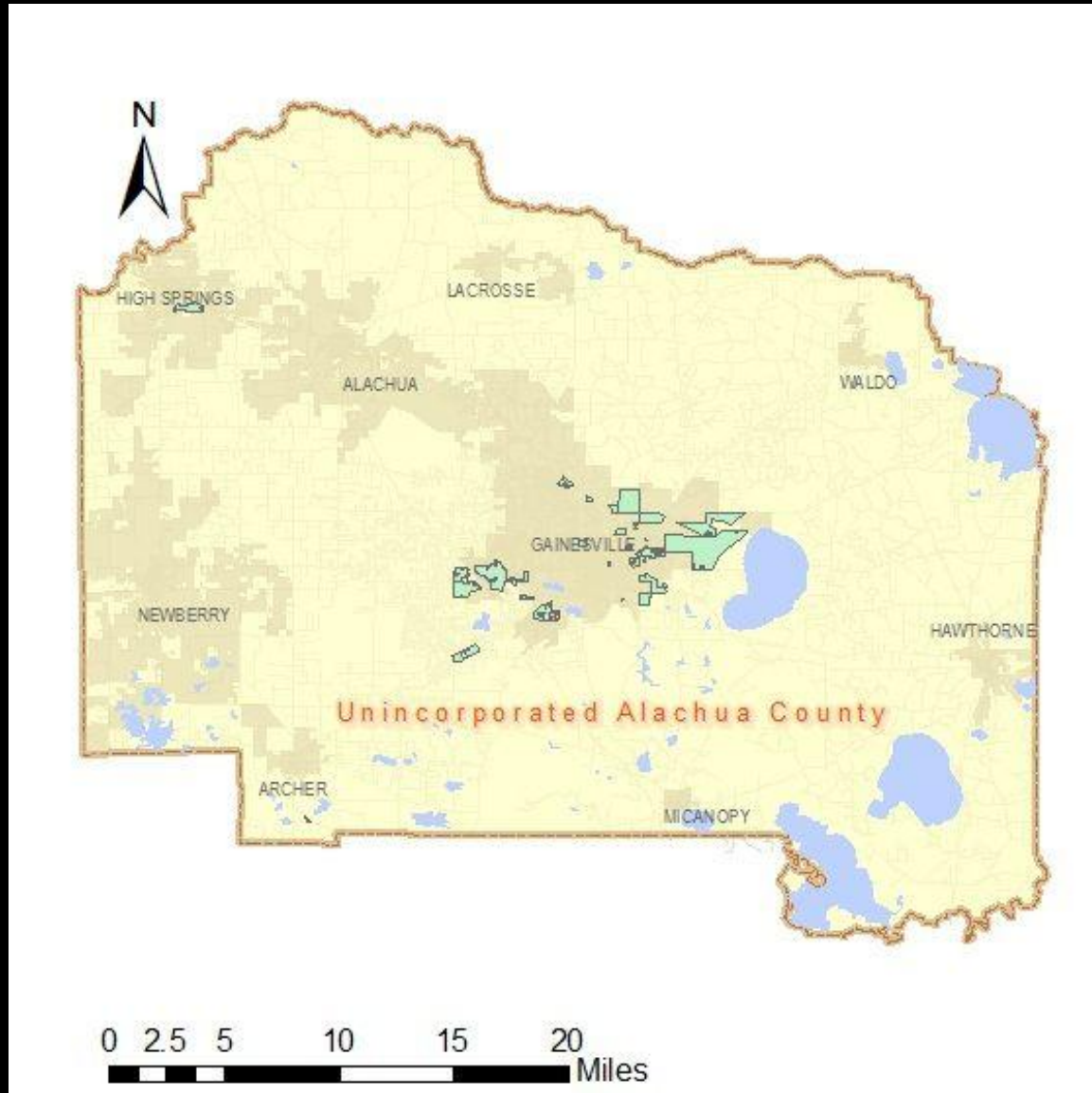


Juvenile Offenses

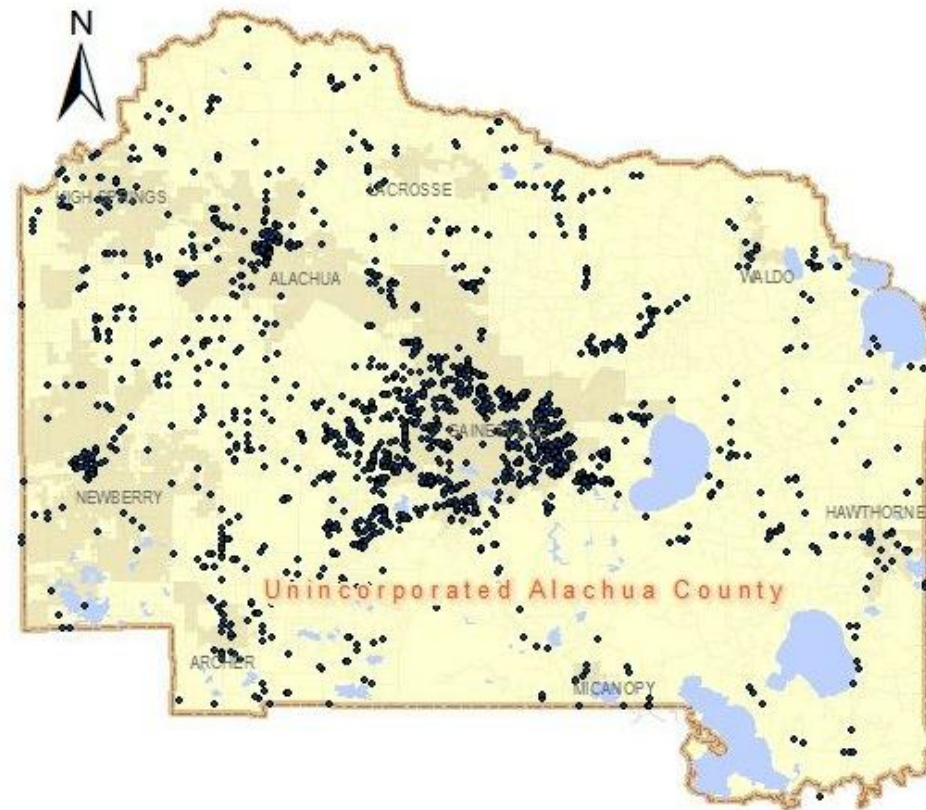


0 2.5 5 10 15 20 Miles

Juvenile Offenses & HHNW

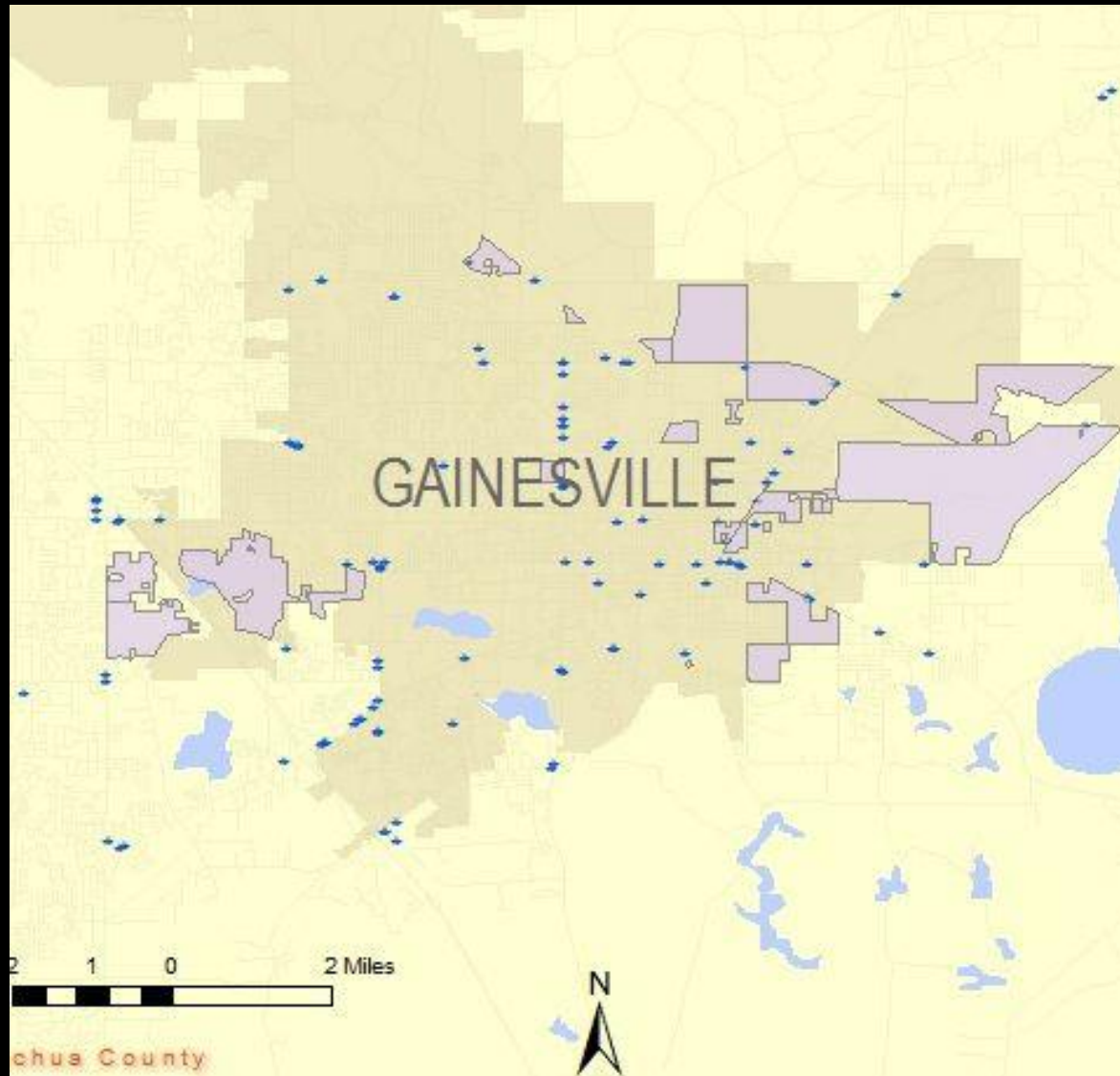


Meal Status

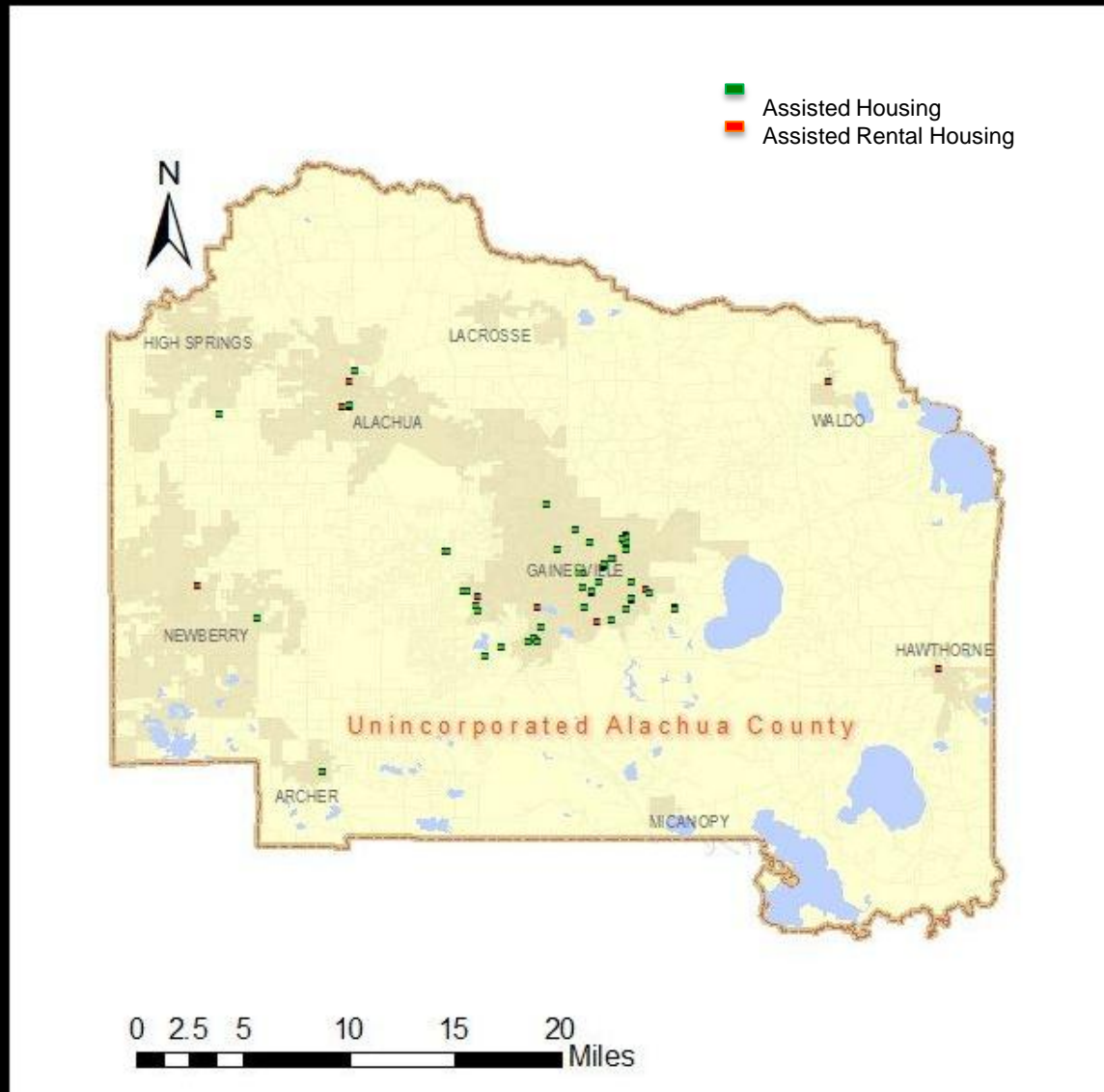


0 2.5 5 10 15 20 Miles

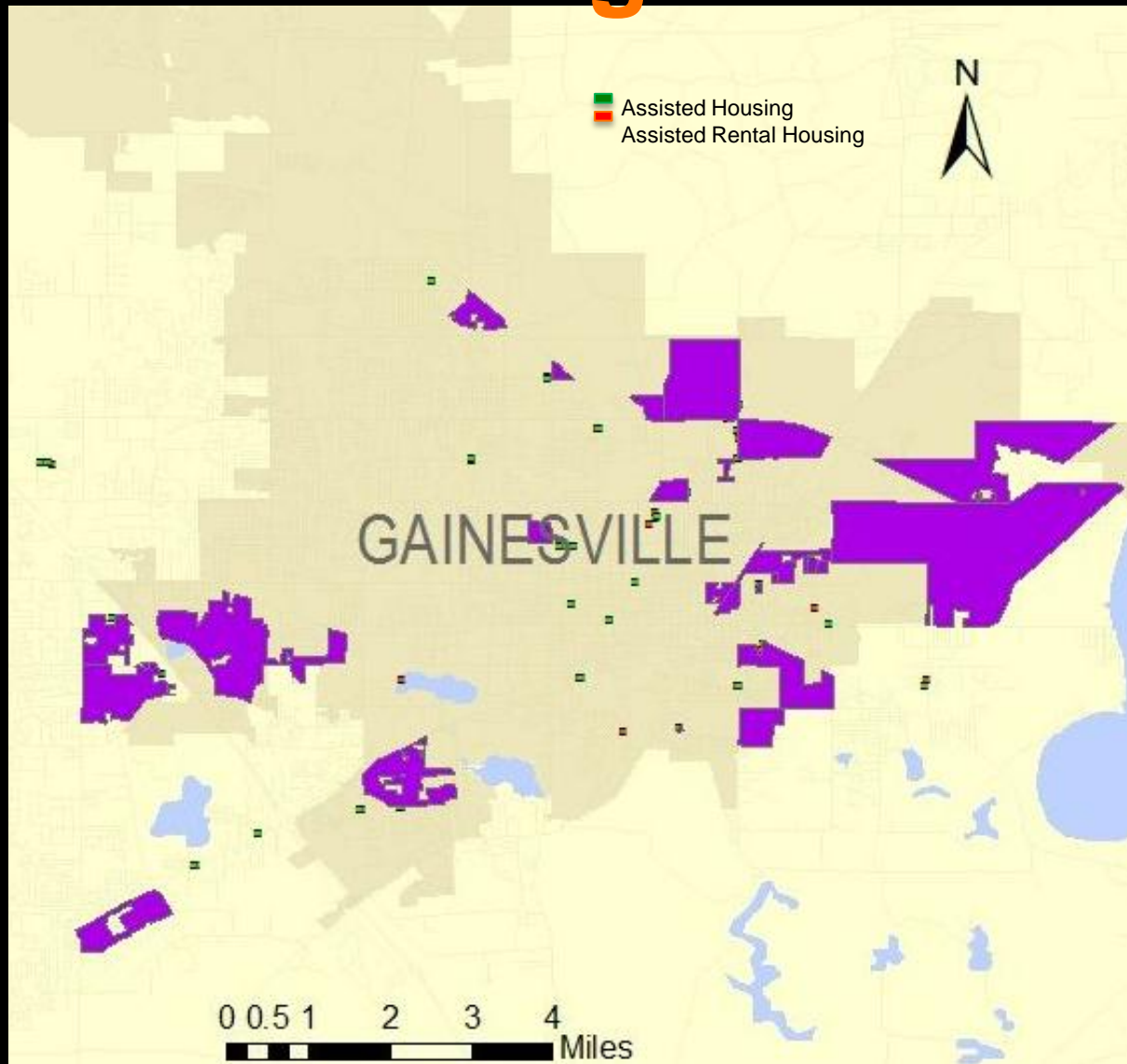
Meal Status, HHNW, & Juvenile



Assisted Housing & Rentals

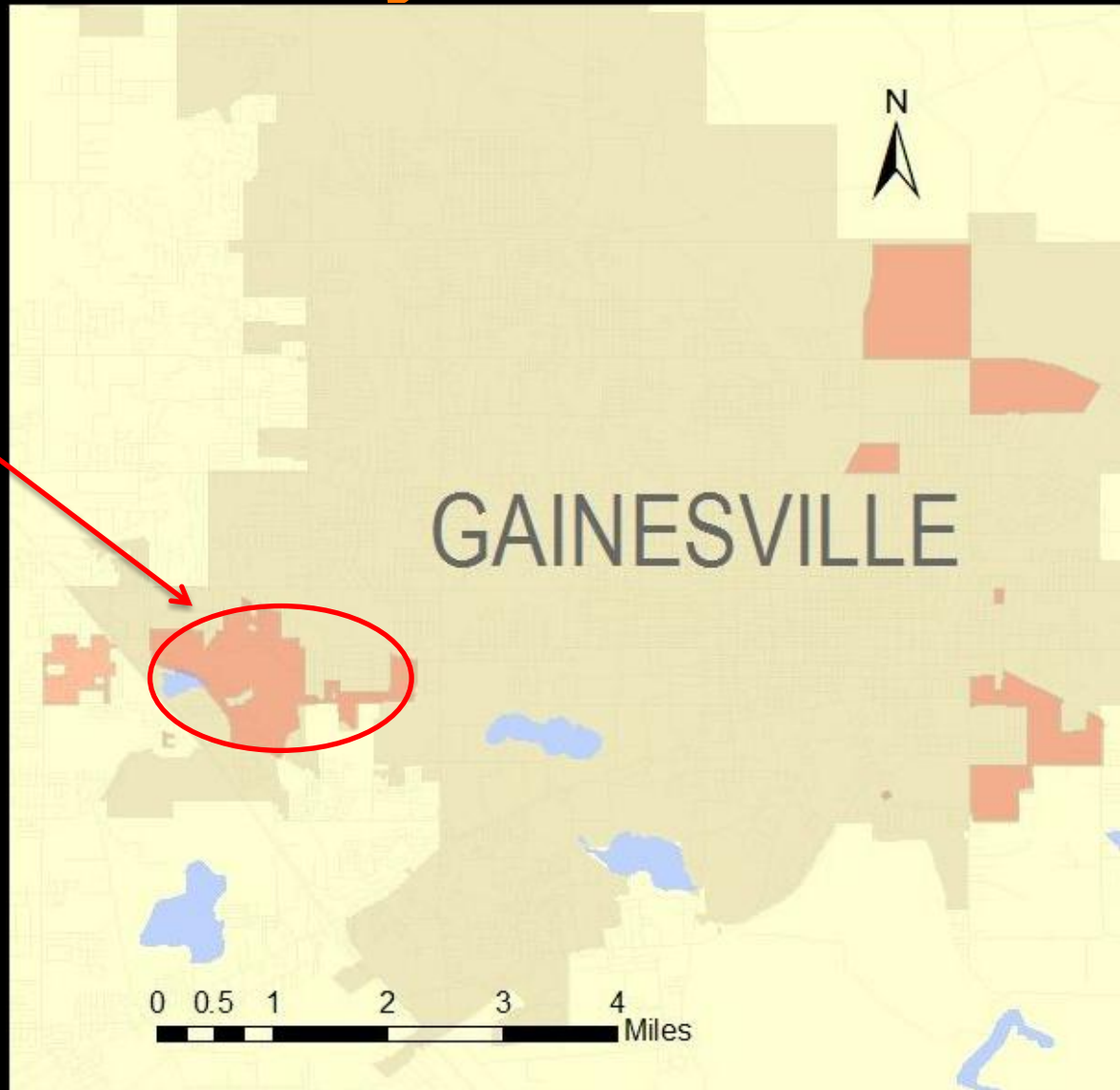


Assisted Housing & Rentals

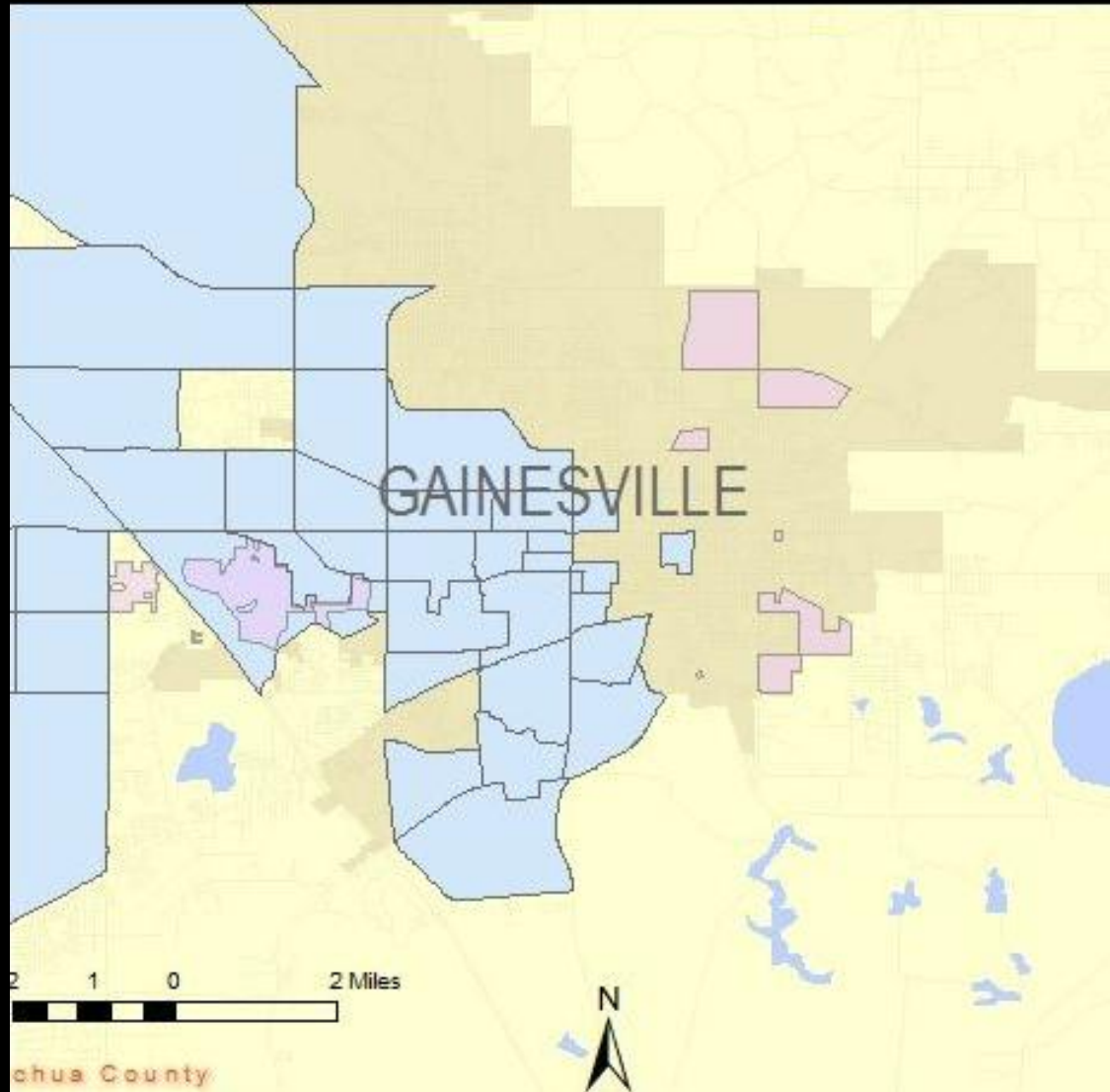


Combined Layers

Lakewood Villas
Spyglass Apts
Cabana Beach

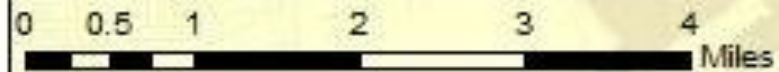
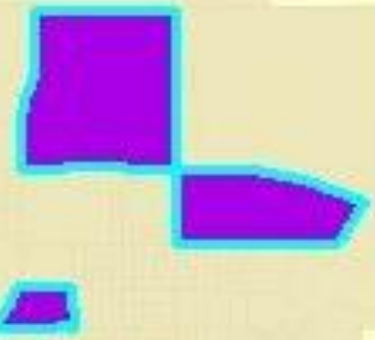


College by Block





GAINESVILLE

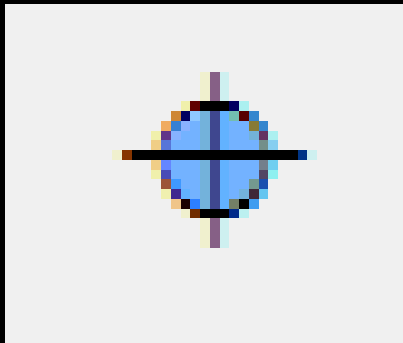




**Neighborhood Example 1
Highland Court Manor**

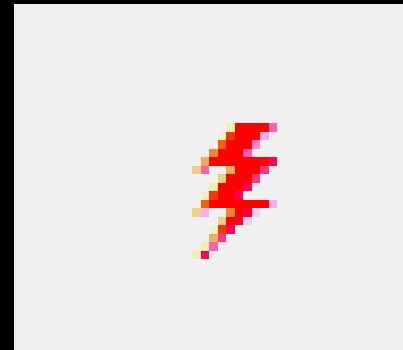
- Amenities

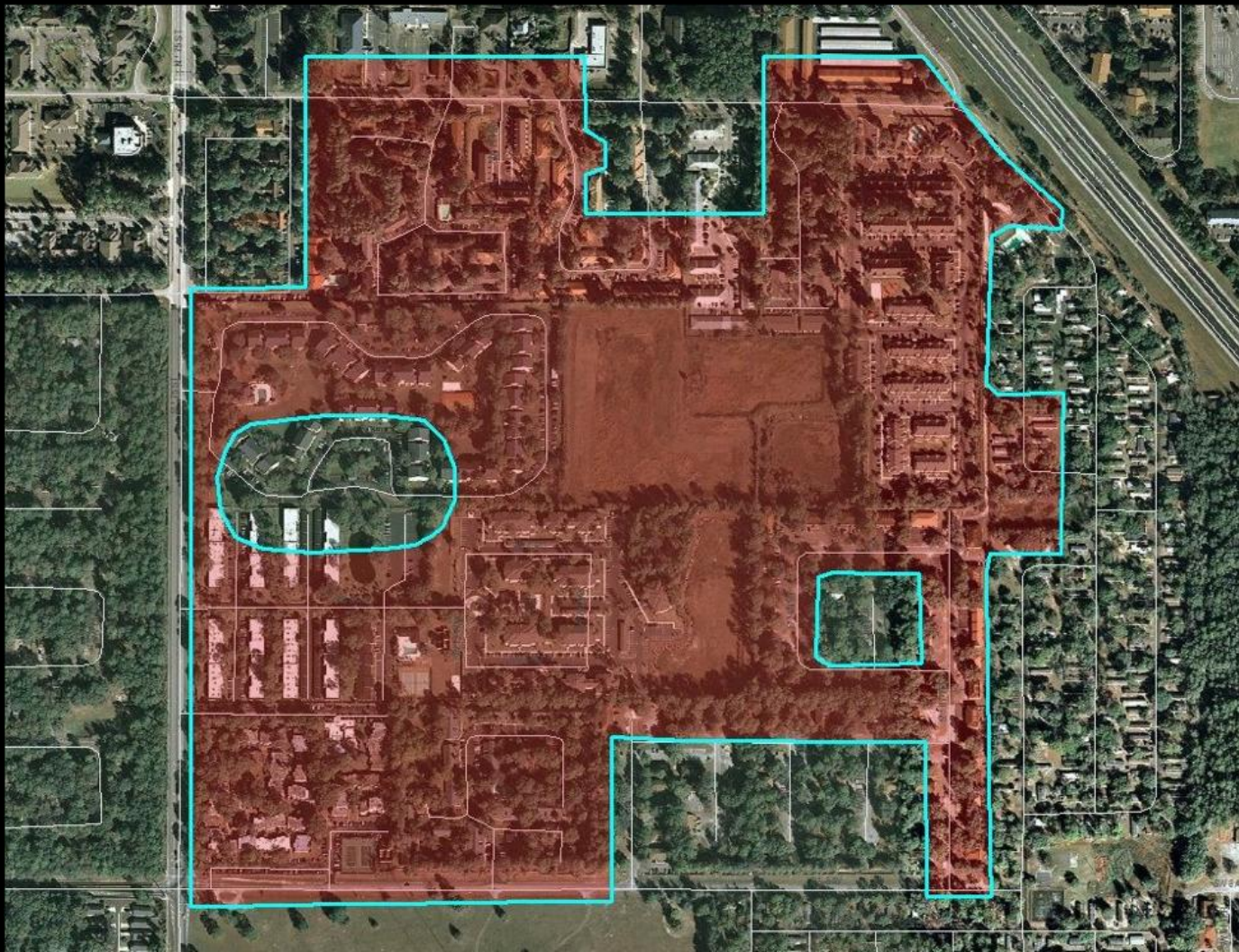
- Gyms
- Swimming pools
- Parks
- Youth Organizations
- Etc.



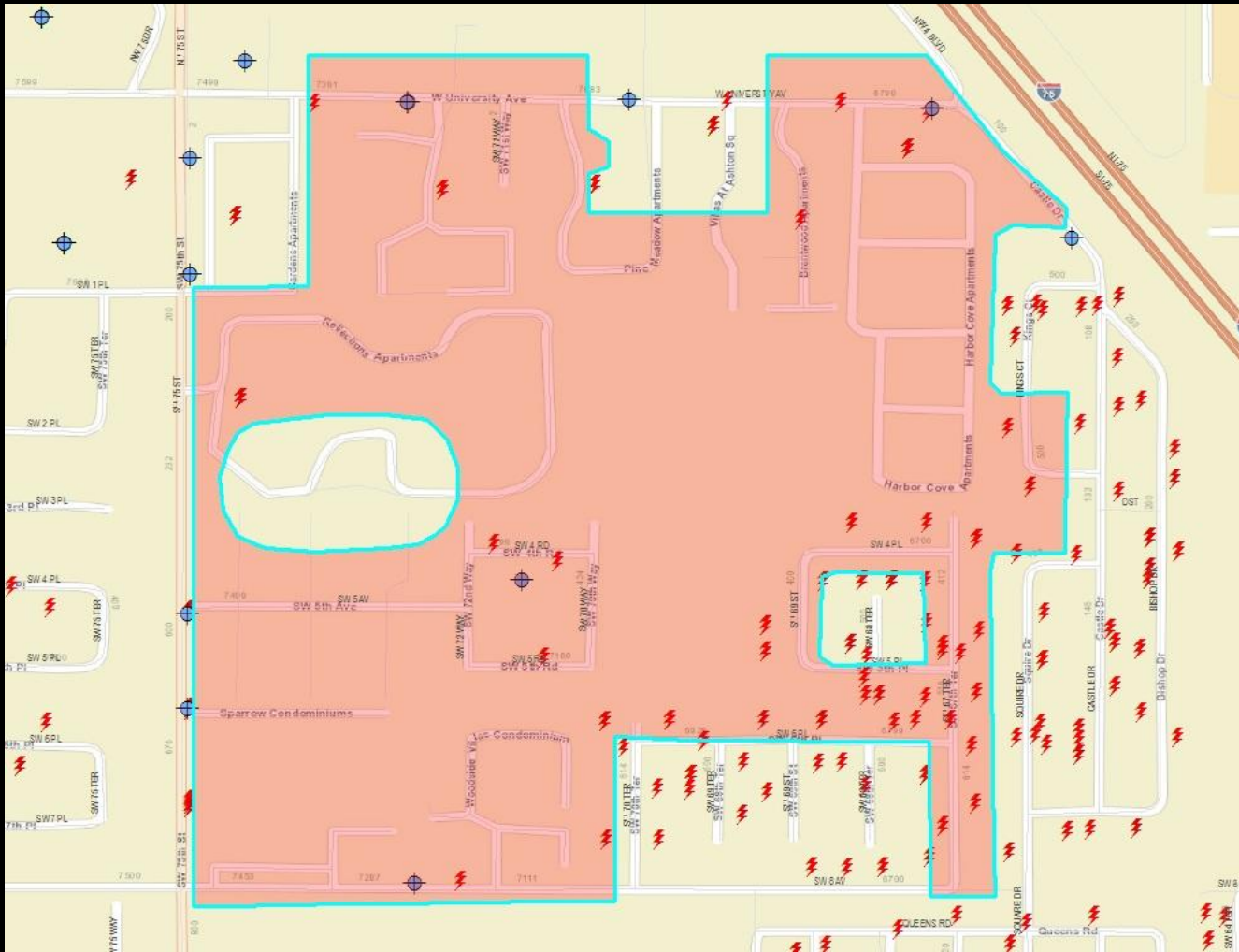
- Dangers

- Domestic Violence
- Child Neglect
- Sex Offenders





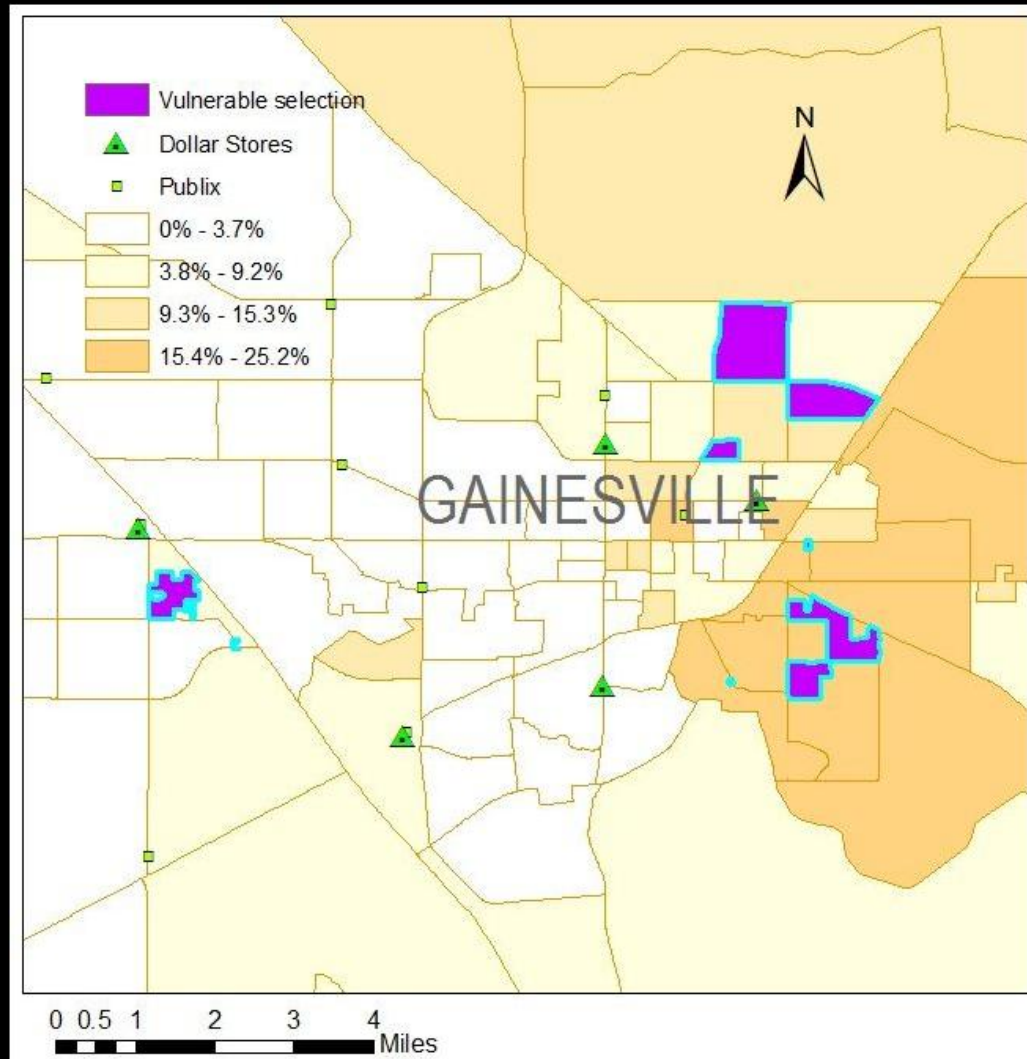
**Neighborhood Example 2
North Tower Road**



**Neighborhood Example 2
North Tower Road**

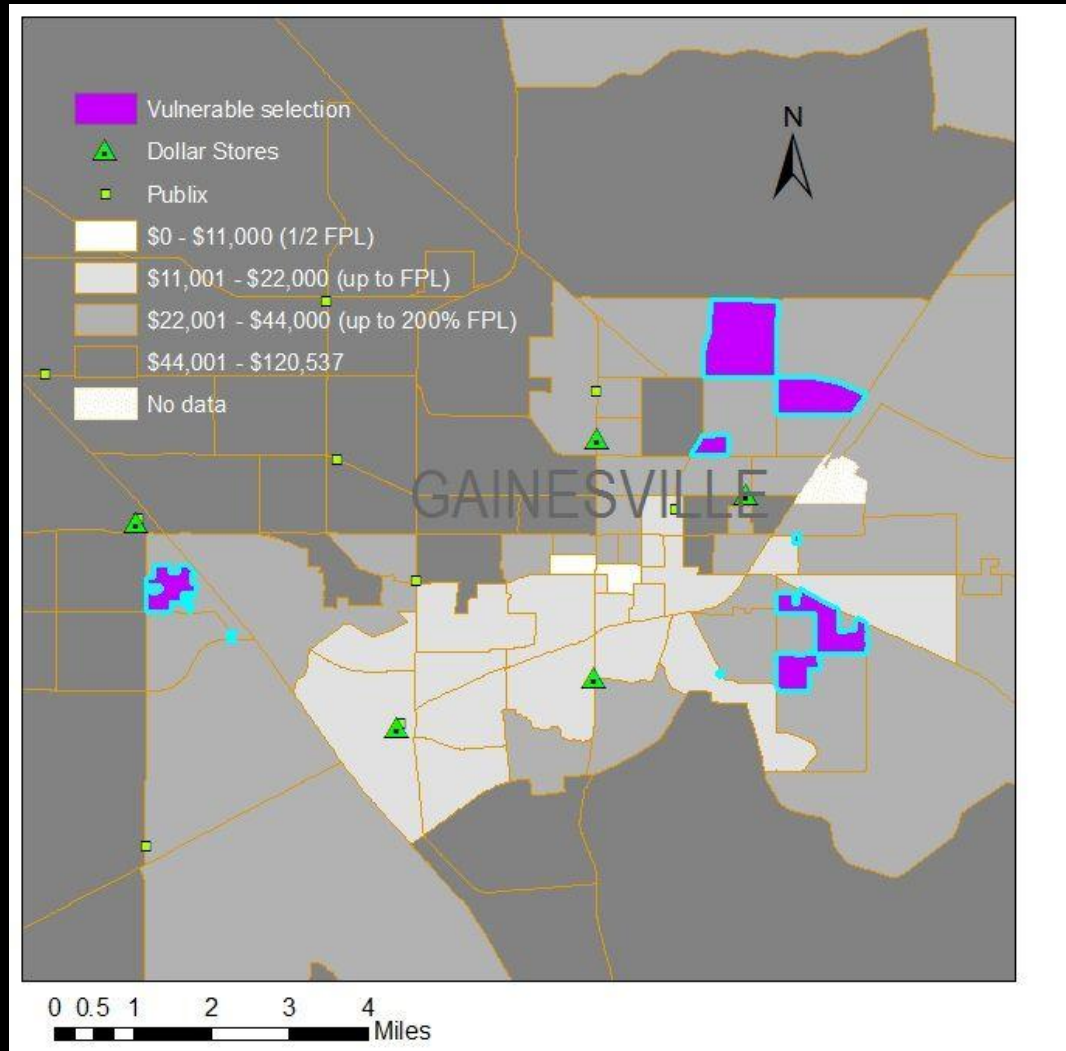
Cross Referencing Data:

Education Level



Cross Referencing Data:

Household Income



Conclusions

- Data analysis showed 8 vulnerable neighborhoods in Alachua county
- Hope in the form of amenities
- Redirect public funds away from incarceration and towards proactive programs
- Future work with improved sources of data

A decorative graphic consisting of several colored rectangular bars and rounded corners. A vertical purple bar is on the left. Below it, a blue bar extends horizontally. To the right of the blue bar, there are three more horizontal bars: a purple one, a yellow one, and a red one. The red bar has a rounded right end. Below the red bar, a yellow bar extends vertically. The entire graphic is set against a black background.

Questions?